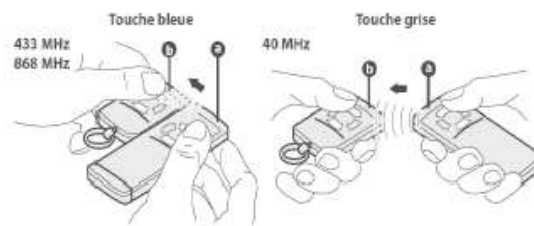


Manual

HORMANN: HSP4 868mhz, HSP4 Blue 868mhz and Tubauto HSM2 40mhz

How to set up your new remote control

Note: Your old Hormann HS1 or HS2 model is obsolete and replaced by the new model Hormann HSE2 with the same frequency. The HS4 model is replaced by the new HSM4.



CAUTION: The coding process can cause opening of the door. In order to supervise the door movement and to avoid any bad surprise caused by a coding error, we advise you to do the coding process in the interior of your garage.

Coding based on a remote control already in use with blue or gray button:

- 1) Take a remote control already in use in one hand. Press and hold a button.
- 2) Take in the other hand your new remote control and position the 2 remotes as follows:
For remote controls with blue buttons, edge to edge.
For remote controls with green or gray buttons, head to head.
- 3) On the new remote control, press and hold the same button. The LED light on your new remote control flashes slowly for 4 seconds, then faster, meaning successful coding. Release the keys of the remote controls.
- 4) Repeat with each of the buttons on the remote.
- 5) Try the new remote control.

Coding based on a audio receiver:

For remote controls with blue or gray button.

WARNING: This action cancels all remote controls previously registered on the audio receiver.

- 1) **Locate the radio receiver of your motorization (small gray parallelepiped).**
- 2) Press the push-button on the radio receiver. The LED on the receiver lights up and flashes slowly.
- 3) Take your new remote control and press a button for more than 5 seconds.
- 4) The LED light on the receiver flashes faster.
- 5) Release the button on the remote, the LED on the receiver is still blinking a few seconds then turns off.